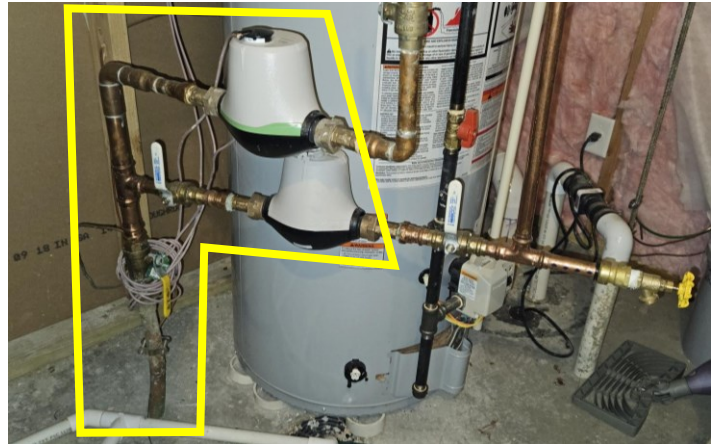


The following photographs show typical water meter locations in West Des Moines. The meters are typically located in the basement or a utility room. In some situations, the meter is located in a meter pit outside near the public roadway. Please include the water service pipe from the entrance to the building up to and including the water meter (outlined in yellow below).

Residential with One Meter



Residential with Two Meters



Residential Meter Pit (Meter under lid)



Commercial with One Meter



Commercial with Two Meters



Commercial with Multiple Meters

